

TI
SYSTEM

TABS TI

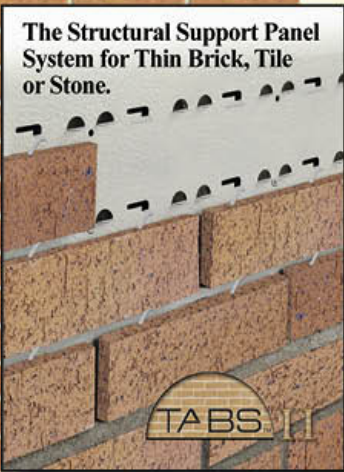
**Offers Owners & Architects
An Exterior Veneer Finish System
Insulated up to R-10**

- Insulated
- G-90 Galvanized
- Thickness (.018)
- Mortar Tie System
- Full 25/50 Year Warranty

TABS TI - The industry's first thermal insulated cavity drainage system for thin brick, tile or stone.

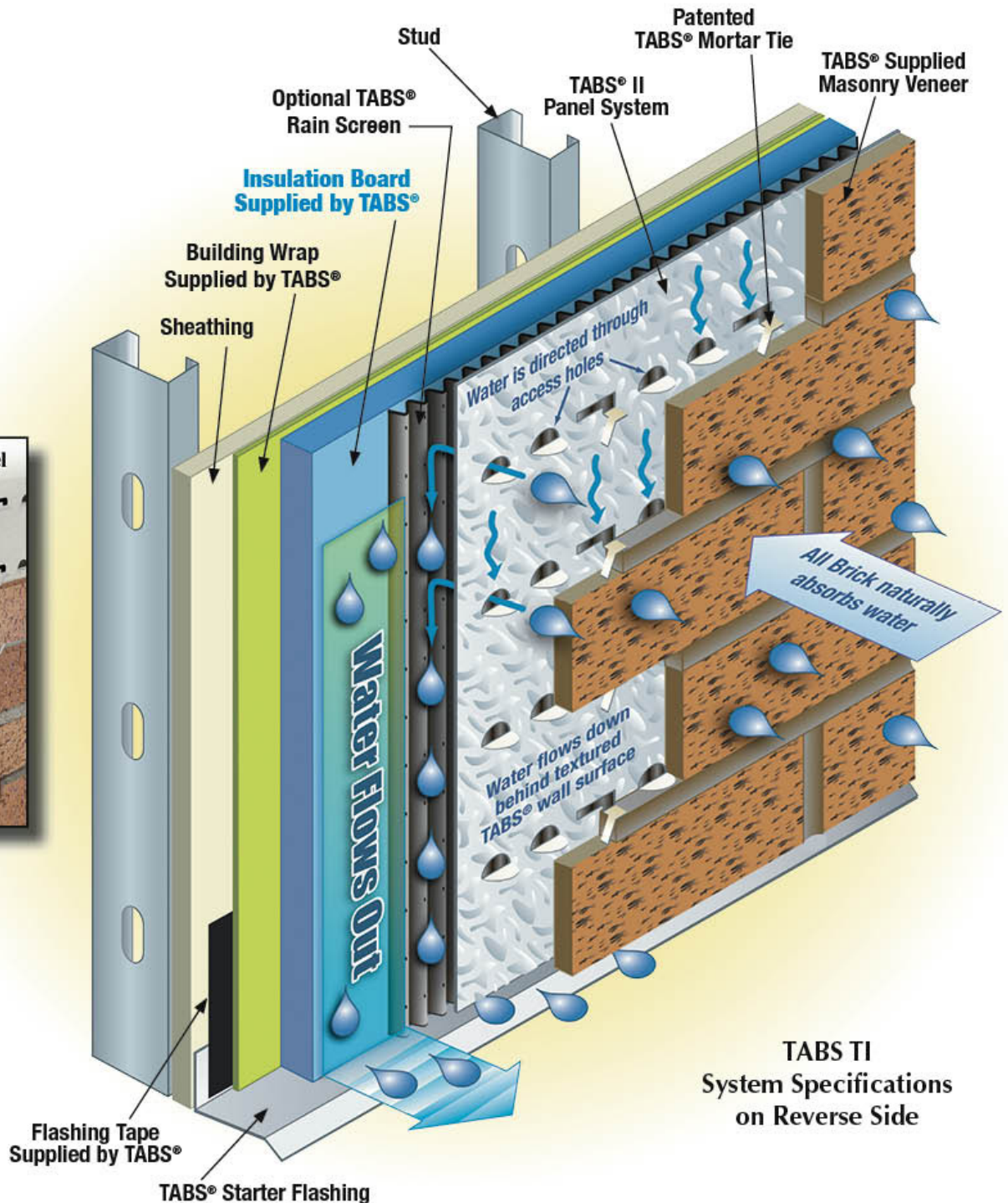


1741869267132146



4515 Airwest Drive, SE
Grand Rapids, MI 49512
Phone: 616.554.5400
Fax: 616.554.5487

info@tabswallsystems.com
www.tabswallsystems.com



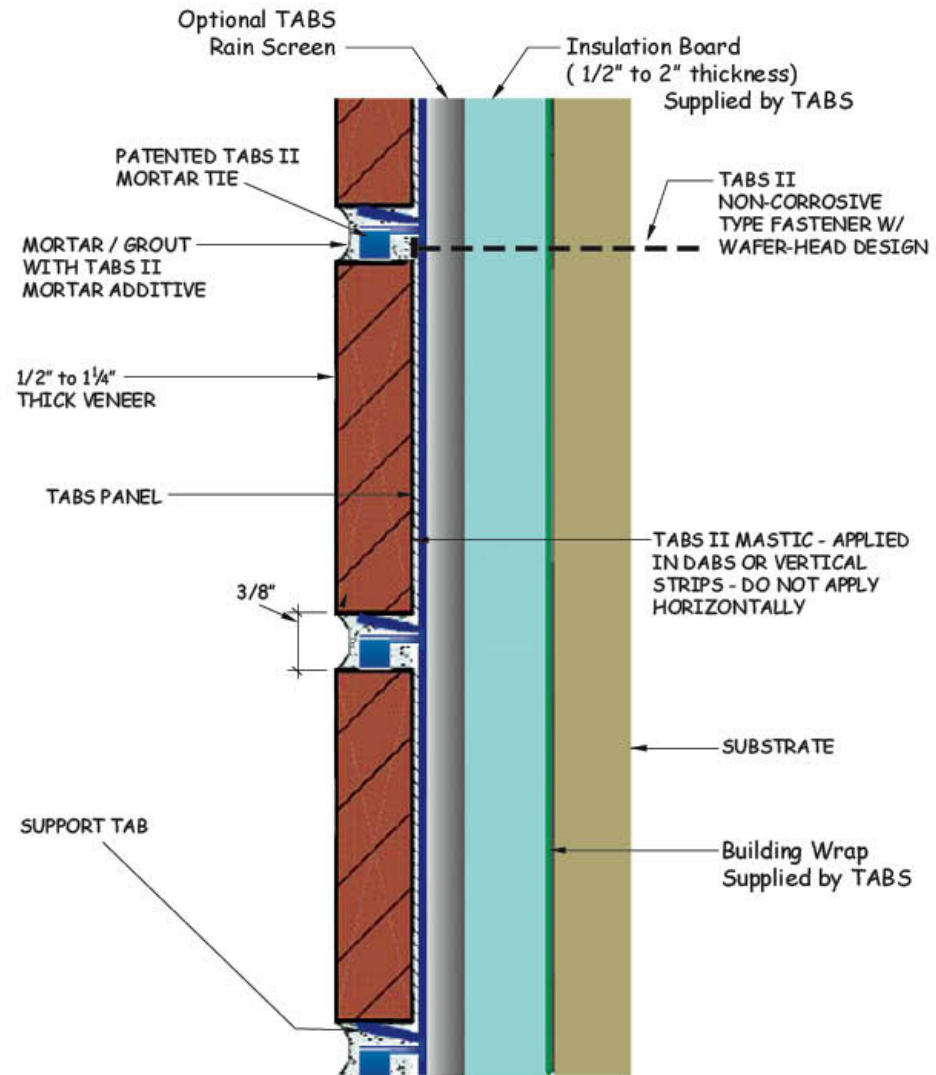
TABS TI
**System Specifications
on Reverse Side**



The Original TABS System was introduced in the mid 1980's and was intended for both exterior & interior use. It was designed to match the thermal movement of the veneer and offered greater fastener pull through resistance. It also addressed the issue of proper spacing with its double tabbed design. In addition, the original TABS Panel was embossed to make it one of the industry's first moisture control systems.

TABS TI & TABS TI "Plus" Thermal Insulated Panel Systems.

Structural Grade Steel, Mechanical Mortar Tie System, Moisture Control, (optional) Rain Screen, and 1/2" to 2" of Insulation to an R-10.



Product Description	TABS TI	TABS TI Plus
Intended Use	Heavy Duty	Heavy Duty
Quality of Steel Panel	Structural Grade	Structural Grade
Nominal Panel Thickness	.018 / 26 Gauge	.018 / 26 Gauge
Corrosion Protection	G90 Hot Dipped	G90 Hot Dipped
Panel Coating	Thermal Set	Thermal Set
Embossed Steel Panel	Included	Included
Starter Angle	TABS II 18 to 22 Gauge	TABS II 18 to 22 Gauge
Thermal Insulated Protection	R-2.5 to R-10	R-2.5 to R-10
Patented TABS II Tie System	Included	Included
Mortar Mix	Type "S"	Type "S"
Mortar Additive	TABS II	TABS II
Adhesive	TABS II	TABS II
Fasteners	TABS II Non-Corrosive	TABS II Non-Corrosive
Component Warranty	Full 25 Year	Full 25 Year
Panel Warranty	Full 50 Year	Full 50 Year

Veneer Thickness	Insulation Thickness	R-Value
1/2" Veneer	Up to 2"	R-2.5 to R-10
3/4" Veneer	Up to 1.5"	R-2.5 to R-7.5
1" Veneer	Up to 1"	R-2.5 to R-5

TYPICAL WALL DETAIL WITH RIGID INSULATION