



TABS™

Thin Brick and Veneer Support System



American Made
American Owned

INDEX

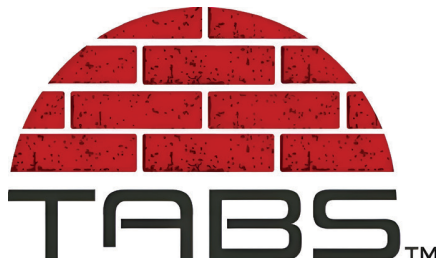
Product information	Page 1-2
TABS® II Panel System	Page 3-4
TABS® II Plus	Page 5-6
TABS® TI	Page 7-8
TABS® TI Plus	Page 9-10
TABS® Stone System	Page 11-12
Fire Rated Rain Screen	Page 13-14
TABS® Control Joint Page	Page 15-16
Picture Page	Page 17



American Made
American Owned

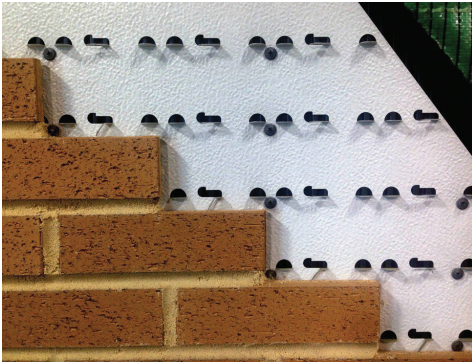
www.tabswallsystems.com

616-554-5400



PRODUCT INFORMATION

TABS WALL SYSTEMS





APPLICATIONS

The TABS Wall System is designed for use in lighter weight construction over framing with steel or wood studs. The system can also be installed over concrete, existing brick, block and cement board. The TABS Wall System is suitable for residential, commercial, industrial and infrastructure applications, with no building height restrictions (per Miami Dade Engineer Report). The system provides the perfect template for the installation of thin veneers (1/2" to 1-1/4" thick) including brick and tile, as well as natural, manufactured and cast stone.

DESCRIPTION

The TABS Wall Systems TABS II Panel is Made in the USA and is G-90 galvanized, thermal set coated, and embossed, Structural Grade 33 Steel panel with support tabs for thin veneers. TABS Wall Systems supplies the appropriate fasteners, adhesives, flashings and mortar additives for installations. In addition, TABS will supply air and moisture weather resistive barriers, insulation, rainscreen drainage cavities and support brackets for larger, heavier veneer accent units.

TABS Wall Systems can also supply various thin veneers, including brick, tile and cast stone, rigid insulations from Kingspan.

TEST		CONCLUSION
TABS has been Tested; TAS 201: impacted test resistance to large and small missel impacts TAS 202: static air presure tested TAS 203 Cyclic wind pressure	 	Miami-Dade County Approved NO. 23-1207.02 Expiration Date 02/08/2029 Florida DB&PR #FL42165 Expiration Date 08/15/2026
ASTM C-297-99 Shear Bond Strength Test of Mastic		1500 lbs of force to pull one modular thin brick from the TABS II panel
AFG-01 Mastic		Not affected by moisture, freeze/thaw cycling or oxidation.
ASTM D 3498 Mastic		Moisture Resistance 100% - No Delaminating, Oxidation Resistance 100%
National Fire Protection Association NFPA 285		Tested Assembly Met the conditions of acceptance
ASTM E-119-00 Fire Resistance Test		Temperature did not rise above prescribed levels and water hose test was met.
ASTM E-84-03 Surface Burn Spread & Smoke Development		Flame Spread Index = 0 Smoke Developed Index-0
ASTM B-117-03 1000 Hour Salt Spray Test		No Staining or corrosion was observed after 24 hours of exposure.
ASTM D1037-99 Nail-Head Pull-Through		The fastener did not pull through the panel.
ASTM E 2273-03 per EG356-2006 Water Drainage		Wet Masonry Percent of Recover was 98.42%.
ICC-ES EG356 3.1.6 Accelerated Weathering		Not affected by accelerated weathering chamber for prescribed period.
ASTM E96-05 ICC-ES EG356 Section 3.1.3 Water Vapor Transmission		Permeance 0.00 Perms.
ASTM C1338-02 ICCES EG356 Section 3.1.1 Fungi Resistance		Demonstrates the resistance of fungal contamination.
*Complete Test Reports Available through TABS Wall Systems		

FEATURES & BENEFITS

- Lightweight – as low as 7 lbs. per square foot, up to 13.5 lbs. per square foot
- Brick veneer uses 80% less embodied energy in comparison to full width brick
- No foundation brick ledge required
- Design load for framing L/360 versus L/600 for full veneer brick.
- No lintels required More usable floor space on same building foot print
- Year-round installation
- Potential lower labor costs (installed by various trades)
- More design freedom (cantilevers, etc) due to lighter weight
- Easily mixed with other lightweight facade materials (i.e. EIFS, sidings, etc)
- Easier to change facade in future renovations
- No height restrictions per M/D & NOA

COMPONENTS

- TABS Panels G-90 galvanized, thermal set coated and embossed structural grade 33 steel panels
- TABS Galvanized and coated fasteners for steel or wood studs; fasteners for cement, stone and brick
- TABS Flashings for façade openings, starter tracks, control joints and transitions to dissimilar materials
- TABS Adhesives designed for brick, tile and stone
- TABS Latex mortar additive for type S mortar

OPTIONAL COMPONENTS

- TABS Drainage Plane Rain Screen 3mm, 5mm, and FRM 5MM
- TABS Air and Moisture Barrier Wrap or Fluid Applied
- TABS Insulation (Optional components can be sourced from others)

CAN BE INSTALLED

The TABS Wall System is designed to provide support and alignment for most adhered thin veneer installations. TABS features an installation video on its web site, as well as an installation guide. Both are available in English and Spanish. In shop or on-site training is available upon request. The TABS Wall System can be installed in exterior and interior applications.

REFERENCE INFORMATION

The TABS Wall System web site (www.tabswallsystems.com) provides the following information:

- System Specification in Master Spec Format
- Installation Guide Lines and Videos
- Summary of Independent Certified Testing
- Systems Details
- Warranty



Corporate ID

1741869267132146

TABS II HEAVY DUTY LIMITATIONS

- Not for use in below grade or submerged conditions
- Standard system installation shall be a minimum of 1-1/2" above finished grade. Installation over foam insulation is limited to 2"; for installations over greater thicknesses, consult TABS Technical Support Department
- Adhesive must be kept free from freezing and heat above 86 degrees
- Panels and veneer must be clean, frost free and dry during installation
- TABS Materials should be stored out of direct sun light
- Installation of mortar must be at 40 degrees and rising
- Veneer thickness: minimum 1/2" (5/16" tab up to 5/8" material) / maximum 1 1/4" on long tab (9/16").
- Veneer weight cannot exceed 13.5 lbs per square ft.
- All mortar/grout joints must be shallow striked.
- Installation shall be to Tabs manual and/or local/regional code whichever is more stringent.

HEALTH AND ENVIRONMENTAL INFORMATION

Material Safety Data Sheets for all components are available upon request. TABS provides HSW AIA programs

TABS II HEAVY DUTY WARRANTY

TABS Wall Systems provides a 25 year system warranty for all provided system components and a 50 year warranty for the panels. Contact TABS for copies of the warranty.

TABS WALL SYSTEMS

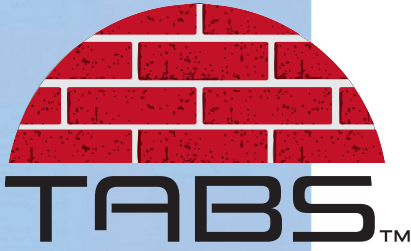
4515 Airwest Drive, SE Grand Rapids, MI 49512

Phone: 616-554-5400 • Fax: 616-554-5487

www.tabswallsystems.com • info@tabswallsystems.com



American Made
American Owned



TABS® II PANEL SYSTEM

- G-90 Galvanized
- Thermoset Stucco Embossed Coating
- Thickness (.018)
- Mortar Tie System
- Full 25/50 Year Warranty

TABS® Panel System is the first and only system to receive both the Miami Dade and Florida Notice of Acceptance. (Ask for Details)



1741869267132146

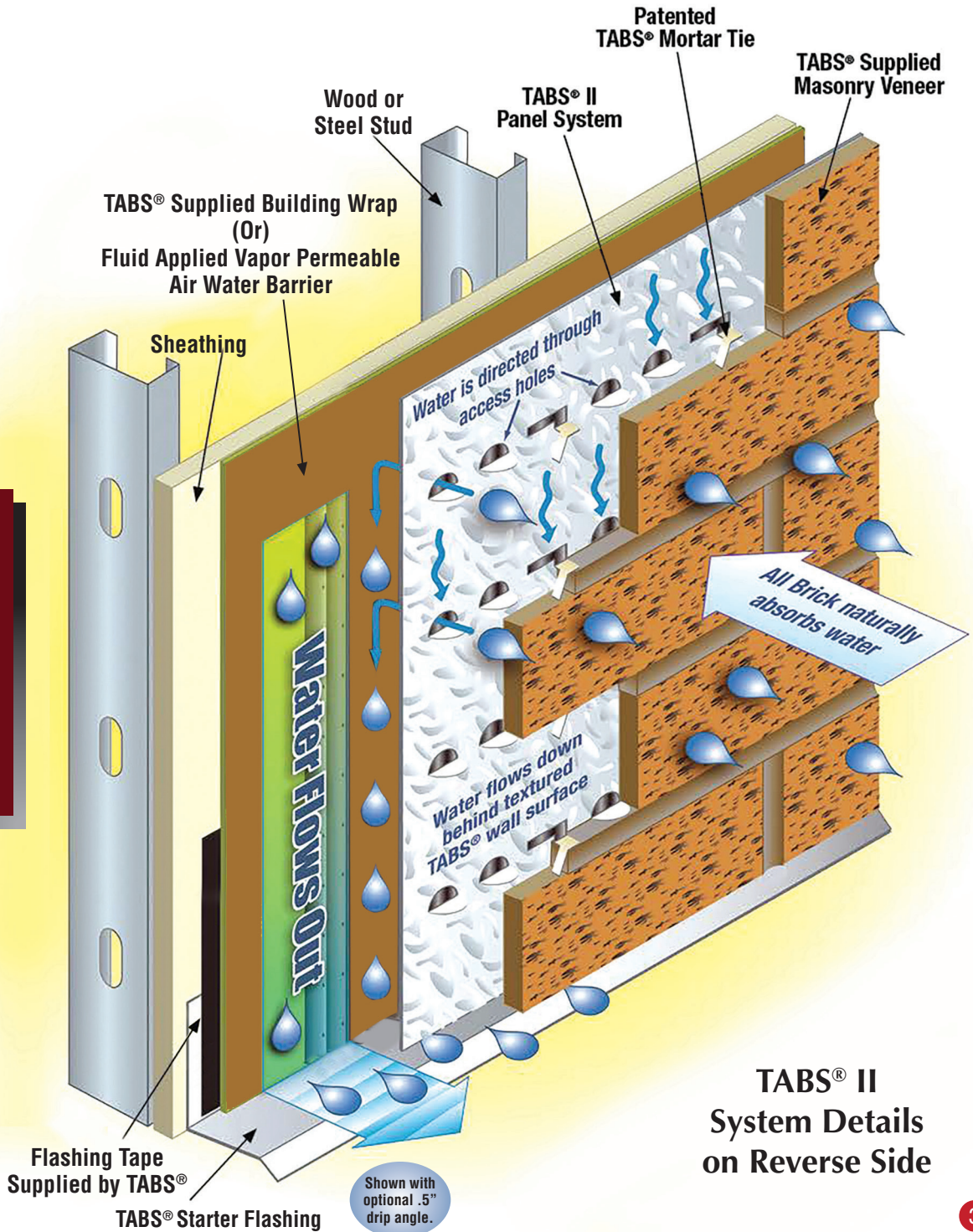
The TABS® II Panel Systems Shown on this page have been Approved by the State of Florida (FI42165) Expiration Date: December 31, 2026 Miami-Dade County, Florida (NOA No. 23-1207.02)- Expiration Date: February 8, 2029).

4515 Airwest Drive, SE
Grand Rapids, MI 49512
Phone: 616.554.5400
Fax: 616.554.5487

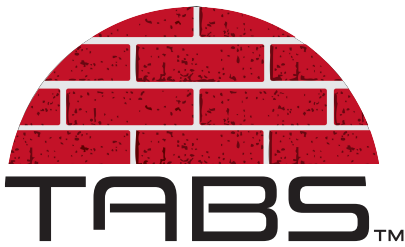
info@tabswallsystems.com
www.tabswallsystems.com



American Made
American Owned

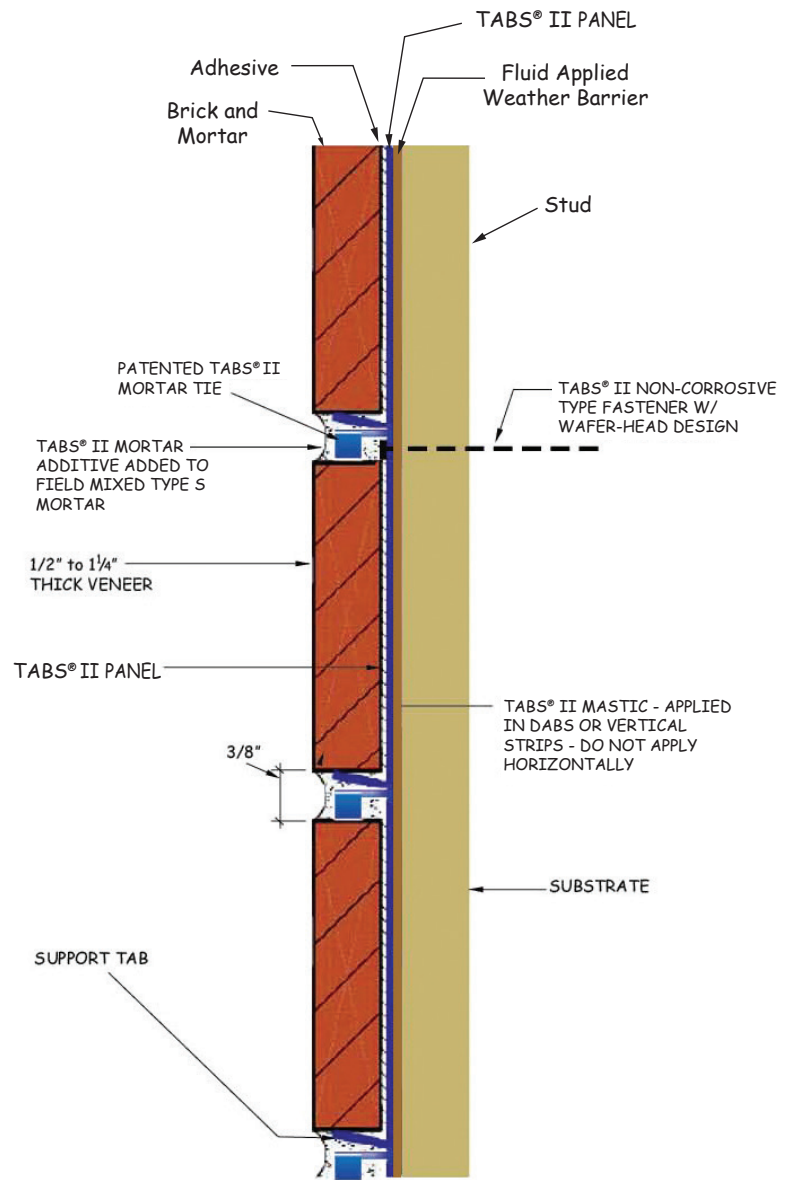


TABS® II
System Details
on Reverse Side



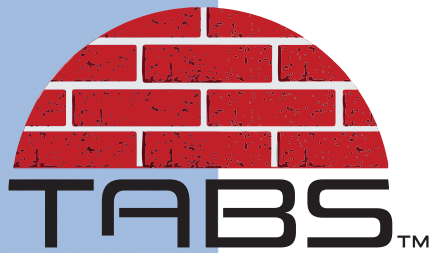
The Original TABS System was introduced in the mid 1980's and was intended for both exterior & interior use. It was designed to match the thermal movement of the veneer and offered greater fastener pull through resistance. It also addressed the issue of proper spacing with its double tabbed design. The original TABS panel was embossed to make it one of the industry's first moisture control systems. Today, the TABS® II Panel offers thicker steel, a patented mortar tie with deeper embossing.

The TABS® II Wall System is the most thoroughly tested, inspected, and accepted USA made thin brick wall system available today in the USA.



TYPICAL WALL DETAIL

<u>Product Description</u>	<u>TABS II System</u>
Intended Use	Heavy Duty
Quality of Steel	Structural Grade
Nominal Panel Thickness	.018 / 26 Gauge
Corrosion Protection	G90 Hot Dipped
Panel Coating	Thermal Set
Embossed Steel Panel	Included
Moisture Control	Included
Patented TABS® II Tie System	Included
Mortar Mix	Type S
Mortar Additive	TABS® II
Adhesive	TABS® II
Fasteners	TABS® II Non-Corrosive
Component Warranty	Full 25 Year
Panel Warranty	Full 50 Year



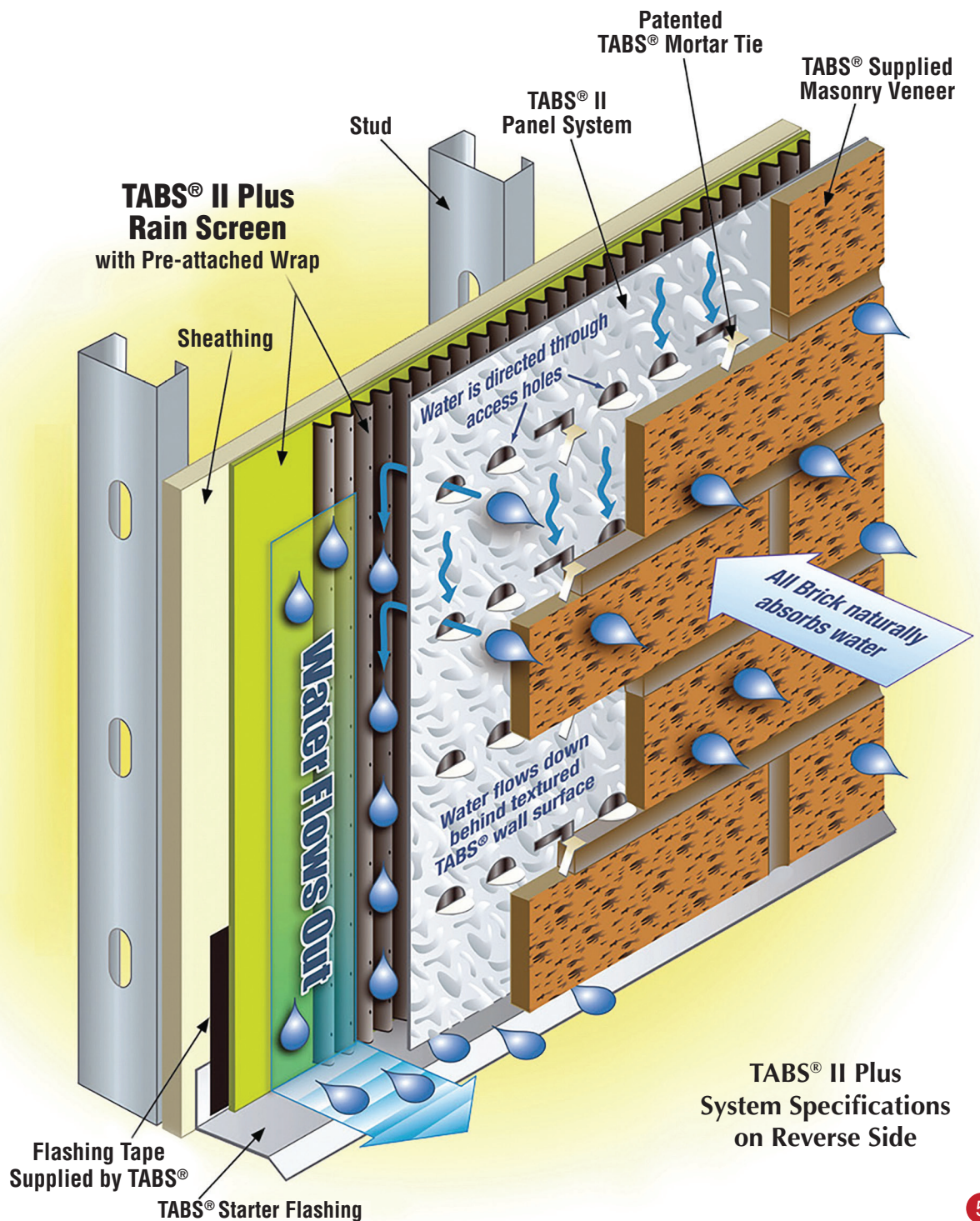
Thin Brick Support System and Veneer Support

- Rain Screen
- G-90 Galvanized
- Thickness (.018)
- Mortar Tie System
- Full 25/50 Year Warranty



TABS® II PLUS Rain Screen w/Wrap

TABS® II Plus - A dedicated system for cavity drainage. TABS® II Plus is designed for projects which are subjected to heavier than normal wind driven rain and capillary action.



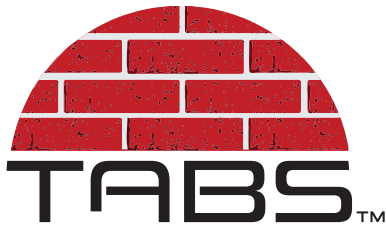
TABS® II Plus
System Specifications
on Reverse Side

4515 Airwest Drive, SE
Grand Rapids, MI 49512
Phone: 616.554.5400
Fax: 616.554.5487

info@tabswallsystems.com
www.tabswallsystems.com



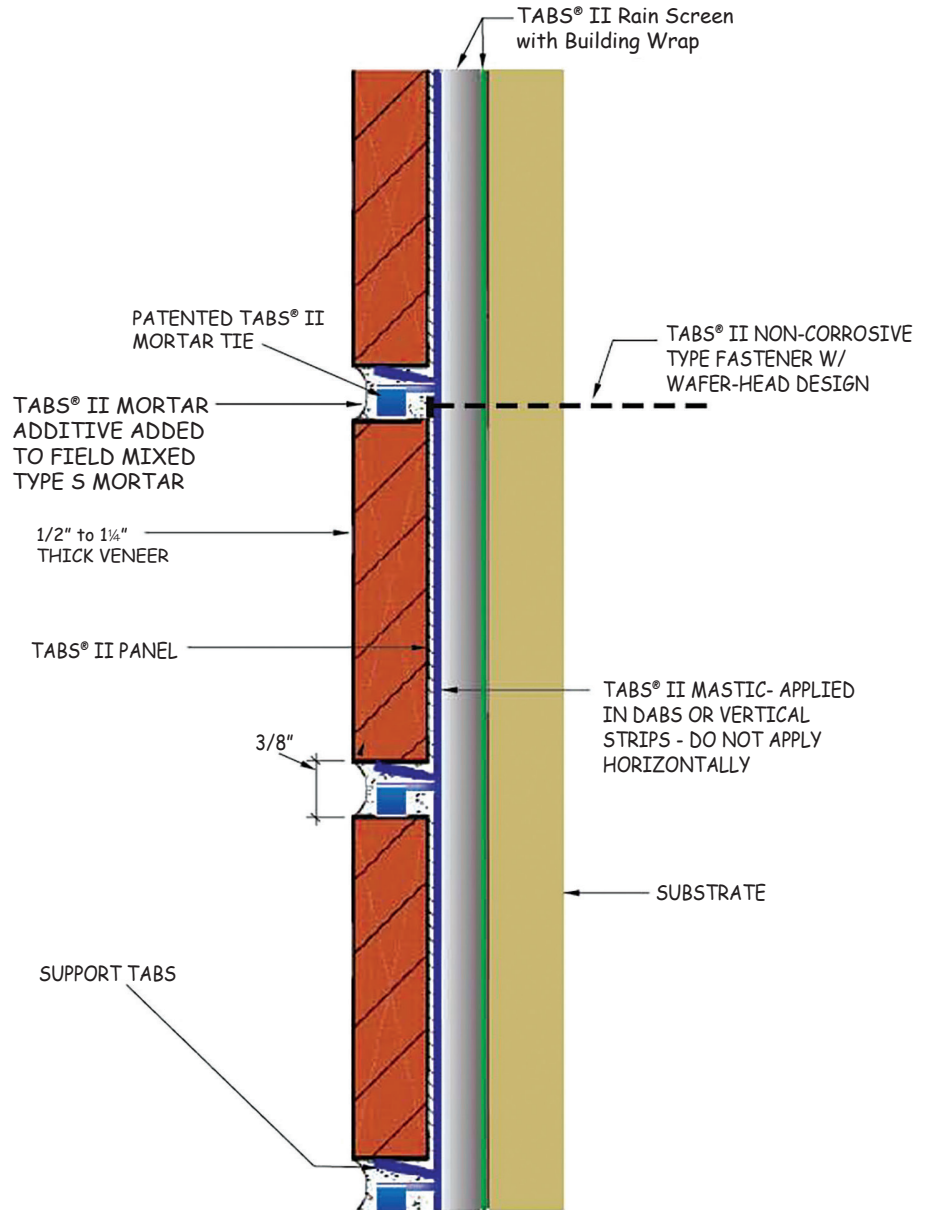
American Made
American Owned



Thin Brick Support System and Veneer Support

The Original TABS System was introduced in the mid 1980's and was intended for both exterior & interior use. It was designed to match the thermal movement of the veneer and offered greater fastener pull through resistance. It also addressed the issue of proper spacing with its double tabbed design. The original TABS panel was embossed to make it one of the industry's first moisture control systems. Today, the TABS® II Panel offers thicker steel, a patented mortar tie and deeper embossing.

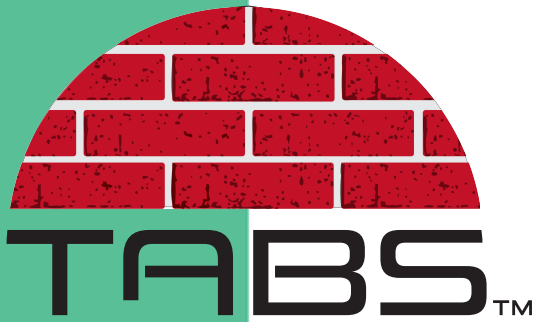
TABS® II Plus includes: TABS® II Heavy Duty Panel, TABS® II Plus Rain Screen Wrap, TABS® II Adhesive, TABS® II Mortar Additive & Type S mortar mix.



<u>Product Description</u>	<u>TABS® II Plus</u>
Intended Use	Heavy Duty
Quality of Steel	Structural Grade
Nominal Panel Thickness	.018 / 26 Gauge
Corrosion Protection	G90 Hot Dipped
Panel Coating	Thermal Set
Embossed Steel Panel	Included
Moisture Control	Cavity Drainage System
Patented TABS® II Tie System	Included
Mortar Mix	Type S
Mortar Additive	TABS® II
Adhesive	TABS® II
Fasteners	TABS® II Non-Corrosive
Component Warranty	Full 25 Year
Panel Warranty	Full 50 Year

TYPICAL WALL DETAIL

With Rain Screen



TABBS® TI

**Offers Owners & Architects
An Exterior Veneer Finish System
Insulated up to R-8 Per Inch**

- Insulated
- G-90 Galvanized
- Thickness (.018)
- Mortar Tie System
- Full 25/50 Year warranty

TABBS® TI - The industry's first thermal insulated cavity drainage system for thin brick, tile or stone.



1741869267132146

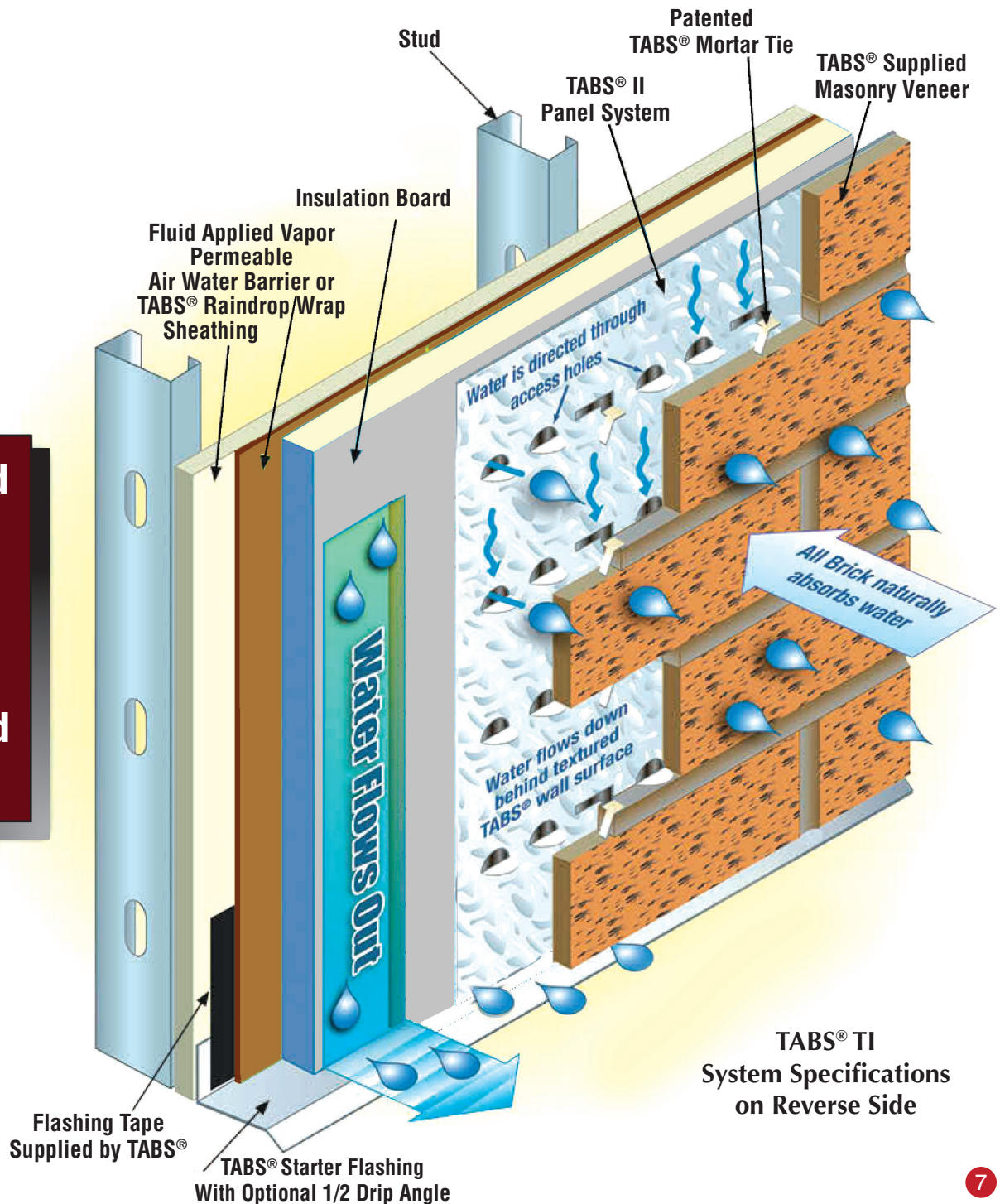
The illustrated assembly is approved through engineering evaluation and judgment.

4515 Airwest Drive, SE
Grand Rapids, MI 49512
Phone: 616.554.5400
Fax: 616.554.5487

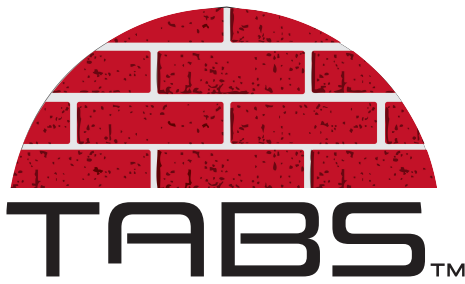
info@tabswallsystems.com
www.tabswallsystems.com



American Made
American Owned



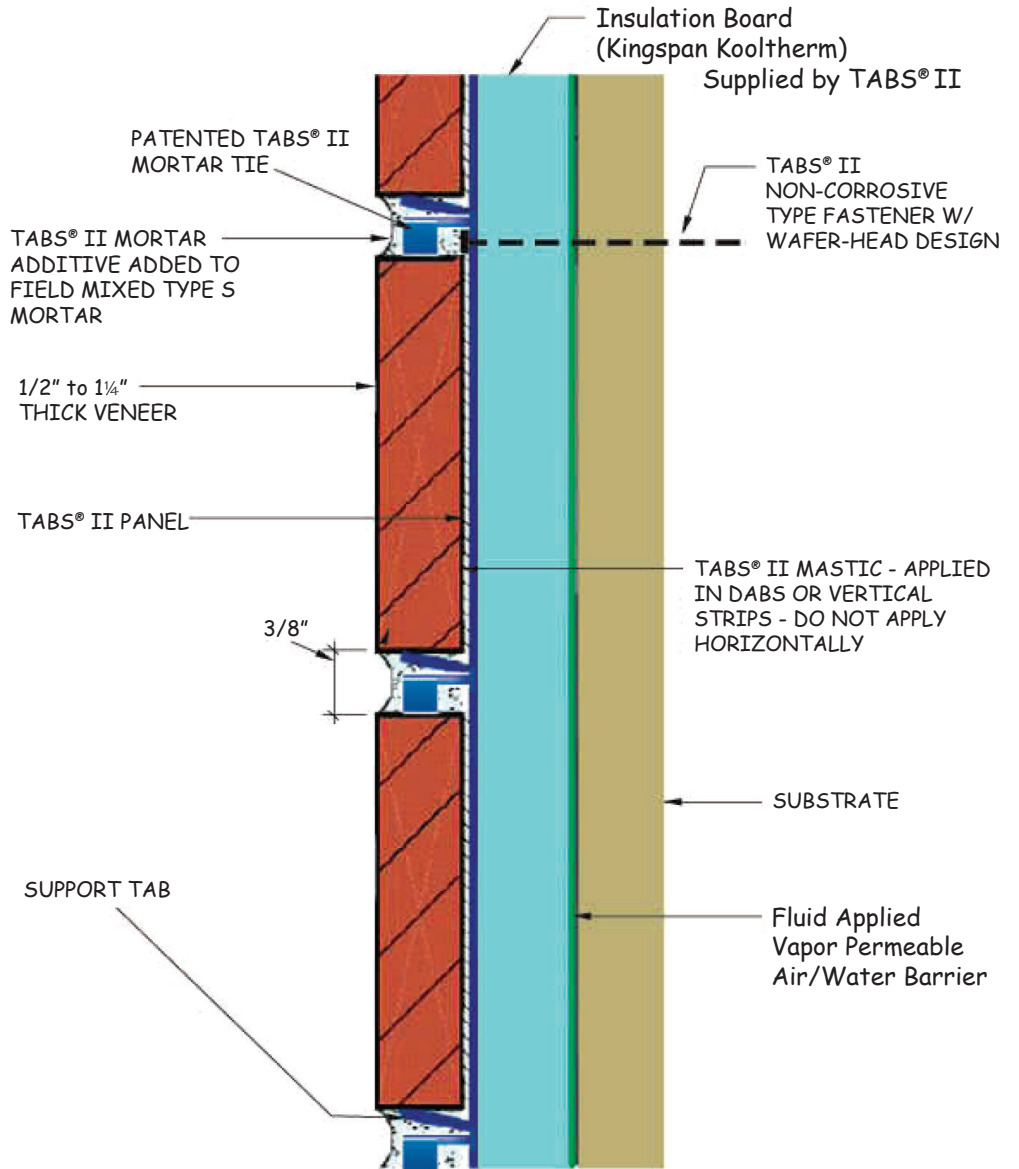
**TABBS® TI
System Specifications
on Reverse Side**



The Original TABS System was introduced in the mid 1980's and was intended for both exterior & interior use. It was designed to match the thermal movement of the veneer and offered greater fastener pull through resistance. It also addressed the issue of proper spacing with its double tabbed design. In addition, the original TABS Panel was embossed to make it one of the industry's first moisture control systems.

TABS® TI Insulated Panel Systems.

Structural Grade Steel, Mechanical Mortar Tie System, Moisture Control, Insulation up to R-8 Per Inch.

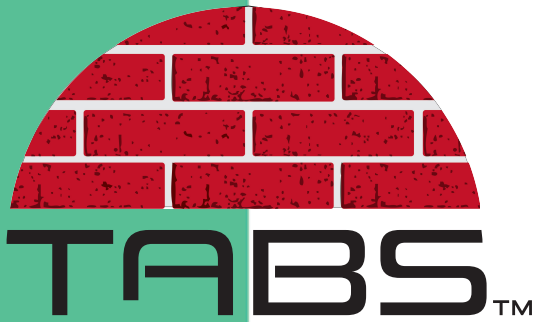


<u>Product Description</u>	<u>TABS® TI</u>
Intended Use	Heavy Duty
Quality of Steel Panel	Structural Grade
Nominal Panel Thickness	.018 / 26 Gauge
Corrosion Protection	G90 Hot Dipped
Panel Coating	Thermal Set
Embossed Steel Panel	Included
Starter Angle	TABS® II 18 to 22 Gauge
Thermal Insulated Protection	Up to R-8 Per Inch
Patented TABS® II Tie System	Included
Mortar Mix	Type S
Mortar Additive	TABS® II
Adhesive	TABS® II
Fasteners	TABS® II Non-Corrosive
Component Warranty	Full 25 Year
Panel Warranty	Full 50 Year

<u>Insulation Chart</u>
<u>R-Value</u>
Up to R-8 Per Inch
Up to R-8 Per Inch
Up to R-8 Per Inch

TYPICAL WALL DETAIL
WITH RIGID INSULATION

DETAIL AS DRAWN
PASSED NFPA285
CONTACT TABS FOR
SPECIFIC TEST DATA



- Insulated
- G-90 Galvanized
- Thickness (.018)
- Mortar Tie System
- Full 25/50 Year warranty



1741869267132146

**The
Assembly
As Shown
Has Passed
NFPA 285**

4515 Airwest Drive, SE
Grand Rapids, MI 49512
Phone: 616.554.5400
Fax: 616.554.5487

info@tabswallsystems.com
www.tabswallsystems.com

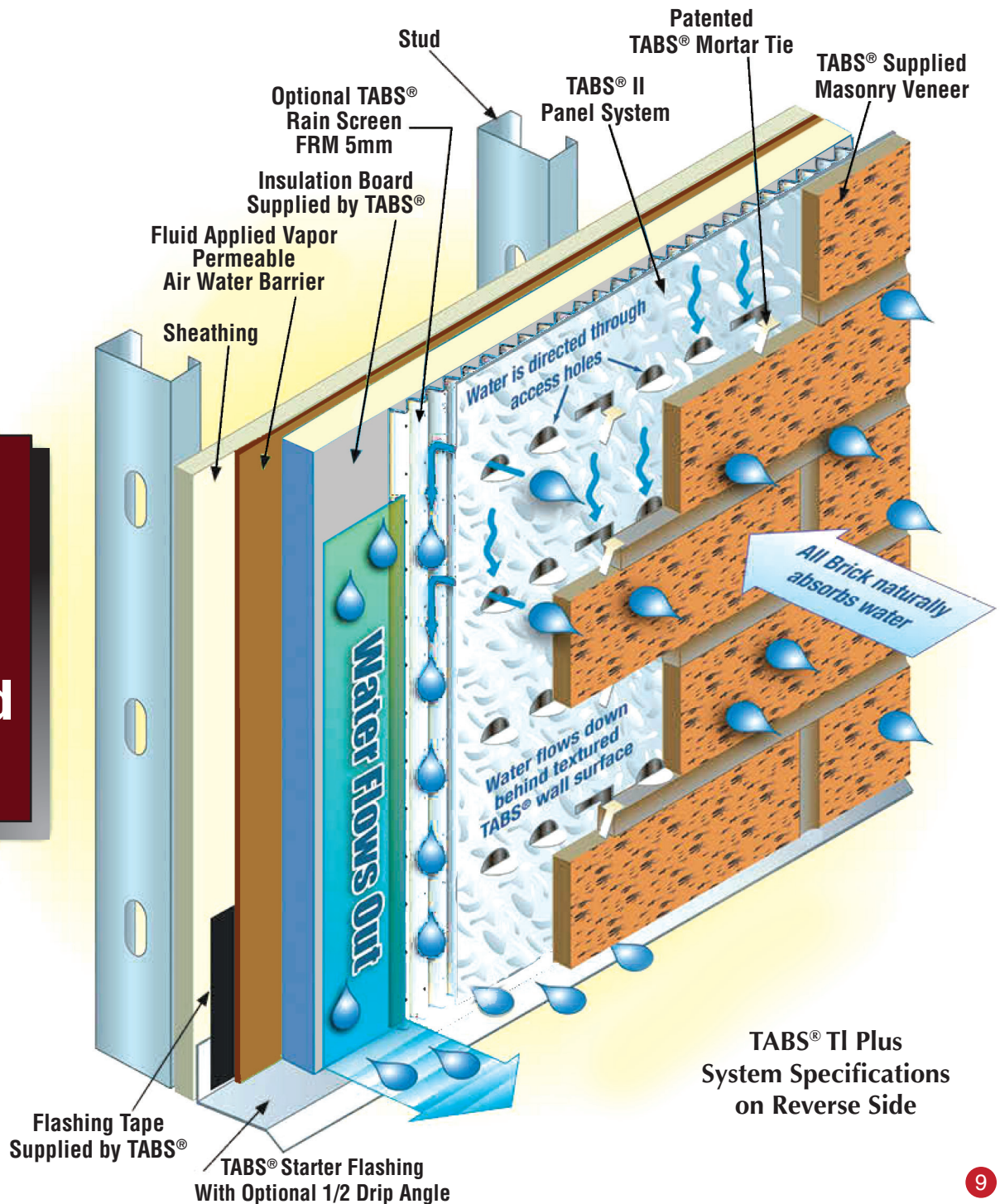


American Made
American Owned

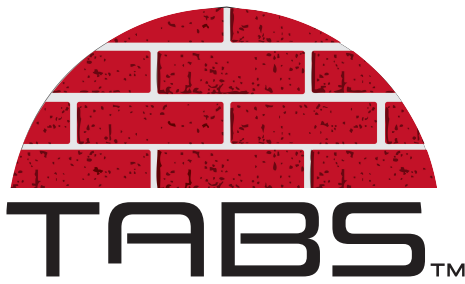
TABS® TI Plus

**Offers Owners & Architects
An Exterior Veneer Finish System
Insulated up to R-8 Per Inch**

TABS® TI Plus - The industry's first thermal insulated cavity drainage system for thin brick, tile or stone.



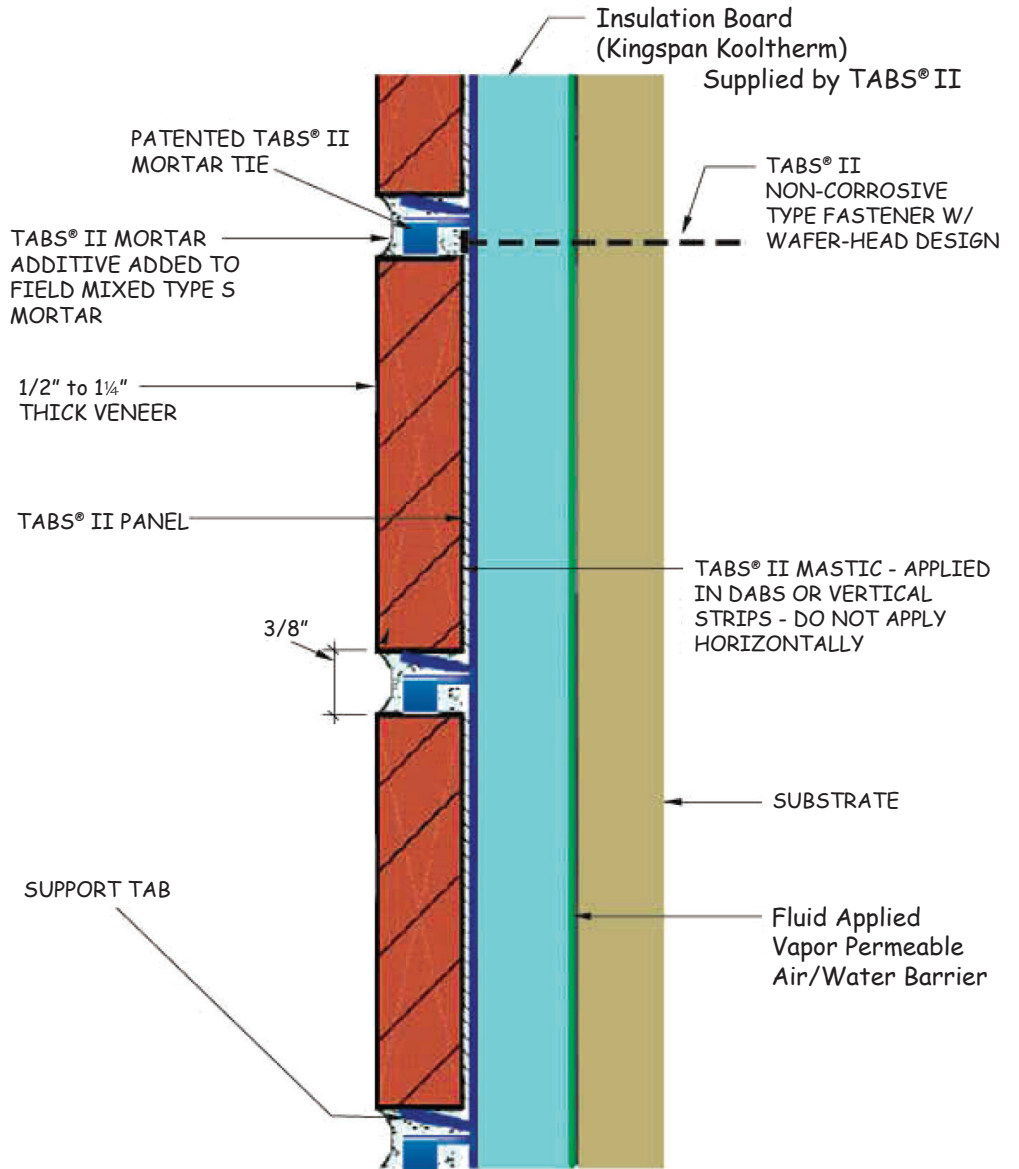
**TABS® TI Plus
System Specifications
on Reverse Side**



The Original TABS System was introduced in the mid 1980's and was intended for both exterior & interior use. It was designed to match the thermal movement of the veneer and offered greater fastener pull through resistance. It also addressed the issue of proper spacing with its double tabbed design. In addition, the original TABS Panel was embossed to make it one of the industry's first moisture control systems.

TABS® TI Plus & Thermal Insulated Panel Systems.

Structural Grade Steel, Mechanical Mortar Tie System, Moisture Control, Insulation up to R-8 Per Inch.

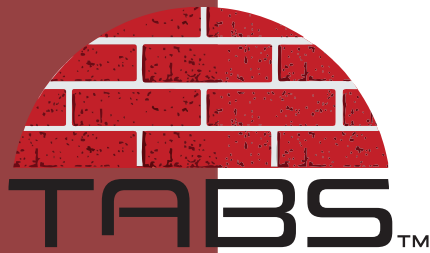


<u>Product Description</u>	<u>TABS® TI</u>
Intended Use	Heavy Duty
Quality of Steel Panel	Structural Grade
Nominal Panel Thickness	.018 / 26 Gauge
Corrosion Protection	G90 Hot Dipped
Panel Coating	Thermal Set
Embossed Steel Panel	Included
Starter Angle	TABS® II 18 to 22 Gauge
Thermal Insulated Protection	Up to R-8 Per Inch
Patented TABS® II Tie System	Included
Mortar Mix	Type S
Mortar Additive	TABS® II
Adhesive	TABS® II
Fasteners	TABS® II Non-Corrosive
Component Warranty	Full 25 Year
Panel Warranty	Full 50 Year

<u>Insulation Chart</u>
<u>R-Value</u>
Up to R-8 Per Inch
Up to R-8 Per Inch
Up to R-8 Per Inch

TYPICAL WALL DETAIL
WITH RIGID INSULATION

DETAIL AS DRAWN
PASSED NFPA285
CONTACT TABS FOR
SPECIFIC TEST DATA



Thin Brick Support System and Veneer Support

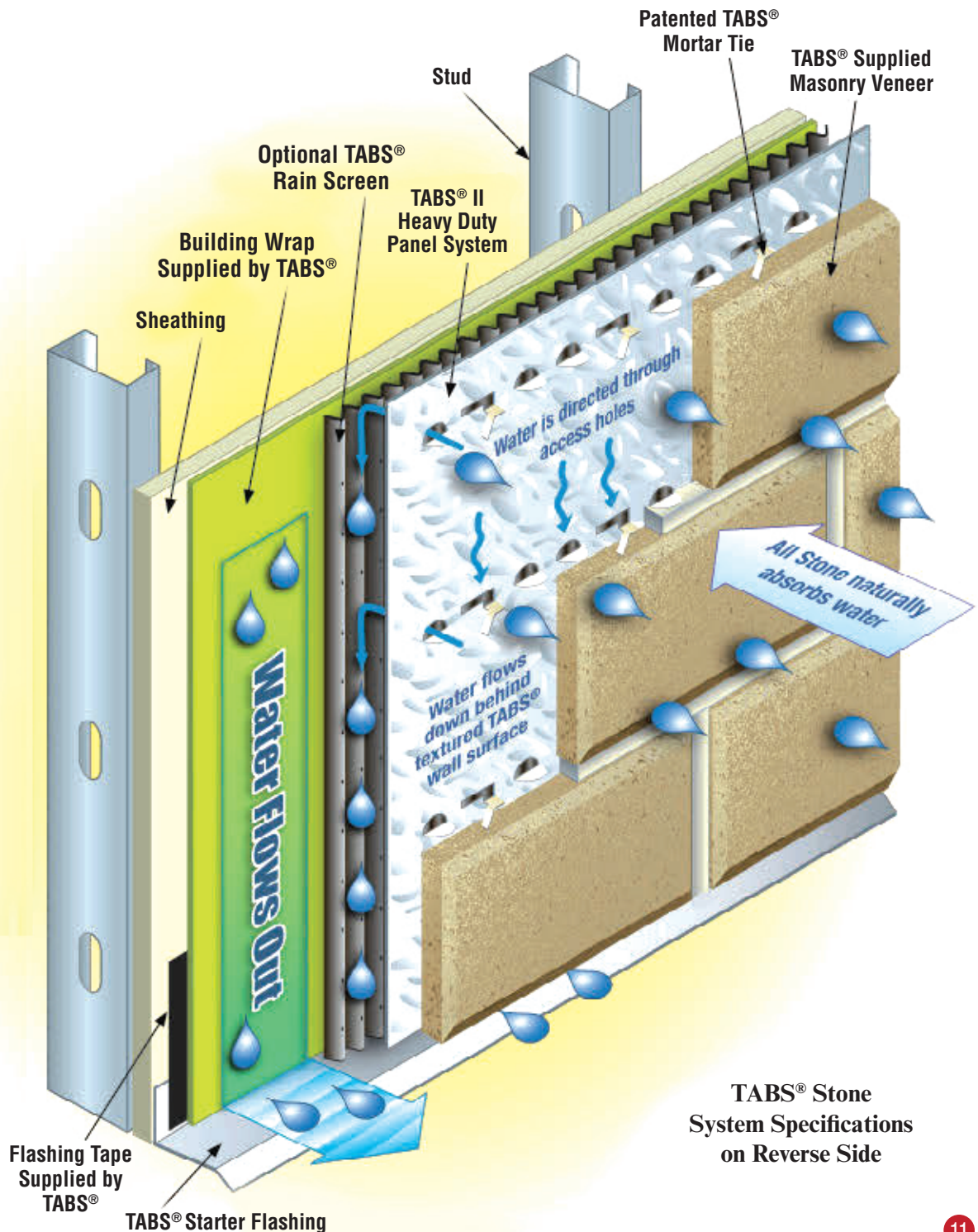
- **Limstone & Cast Stone**
- **G-90 Galvanized**
- **26 Gauge (.018) Thickness**
- **Mortar Tie System**
- **Full 25 Year Warranty**



TABS® Stone System

Designer Thin Stone

TABS® Wall Systems is pleased to offer architects, owners & developers the highest quality Structural Steel Support Panel System for Thin Veneer Limestone and Cast Stone.



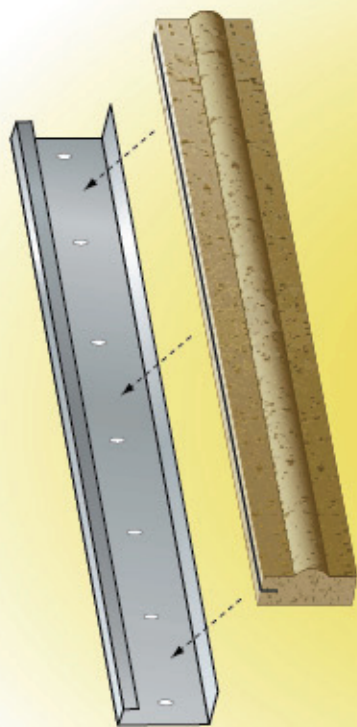
TABS® Stone System Specifications on Reverse Side

4515 Airwest Drive, SE
Grand Rapids, MI 49512
Phone: 616.554.5400
Fax: 616.554.5487

info@tabswallsystems.com
www.tabswallsystems.com



American Made
American Owned



KEYSTONES

STYLE	PRODUCT	A	B	C	D	E
Flat	KEY71FS	3-1/4"	6-3/8"	7-5/8"	1-1/4"	-
	KEY81FS	4"	8"	10-1/4"	1-1/4"	-
Recessed	KEY71RS	3-1/2"	7"	7-5/8"	1-1/4"	1/2"
	KEY81RS	4"	8"	10-1/4"	1-1/4"	1/2"
Chamfered	KEY71CS	3-1/2"	7"	7-5/8"	1-1/4"	1/2"
	KEY81CS	4"	8"	10-1/4"	1-1/4"	1/2"
Batwing	KEY71BS	3-5/8"	7"	10-1/4"	1-1/4"	1"
	KEY81BS	4-5/8"	8-1/2"	11-5/8"	1-1/4"	1"

BANDING - 31 5/8" LONG

Style	Straight	Right Corner	Left	A	B	C
Classic	BAN61LS	BAN61LR	BAN61LL	1-1/4"	2"	7-5/8"
	BAN61MS	BAN61MR	BAN61ML	1-1/4"	1-7/8"	7-5/8"
Julian	Straight			A	B	C
	BAN61NS	BAN61NX	BAN61NX	1-1/4"	3/4"	7-5/8"
Austin	BAN61AS	BAN61AX	BAN61AX	1-1/4"	2"	7-5/8"
Diamond	BAN61ES	BAN61EX	BAN61EX	1-1/4"	2"	7-5/8"
Flat	BAN61FS	BAN61FX	BAN61FX	1-1/4"	-	7-5/8"
Pillow	BAN61PS	BAN61PX	BAN61PX	1-1/4"	2"	7-5/8"

SURROUNDS - 31 5/8" LONG

Style	Straight	Right Corner	Left Corner	A	B	C
Diana	SUR21US2	SUR21UR2	SUR21UL2	1-1/4"	1-1/4"	7-5/8"
	SUR31US2	SUR31UR2	SUR31UL2	2"	1 1/4"	7-5/8"
Alexander	SUR21ES2	SUR21ER2	SUR21EL2	1-1/4"	1-1/2"	7-5/8"
	SUR31ES2	SUR31ER2	SUR31EL2	2"	1 1/2"	7-5/8"
Stanford	SUR21BS2	SUR21BR2	SUR21BL2	1-1/4"	3/4"	7-5/8"
	SUR31BS2	SUR31BR2	SUR31BL2	2 1/4"	3/4"	7-5/8"
Helena	SUR21HS2	SUR21HR2	SUR21HL2	1 1/4"	2 3/8"	7-5/8"
	SUR31HS2	SUR31HR2	SUR31HL2	1 7/8"	2 3/8"	7-5/8"
Mandaly	SUR21MS2	SUR21MR2	SUR21ML2	1-1/4"	1-3/4"	7-5/8"
	SUR31MS2	SUR31MR2	SUR31ML2	2"	1 3/4"	7-5/8"
Lexington	SUR21XS2	SUR21XR2	SUR21XL2	1-1/4"	1 1/2"	7-5/8"
	SUR31XS2	SUR31XR2	SUR31XL2	2"	1 1/2"	7-5/8"

JACK ARCHES - STRAIGHT OUTSIDE EDGE

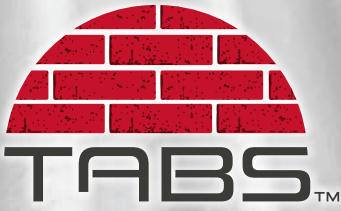
Style	Right	Left	Length	C	D	E
Flat	JAS61FR	JAS61FL	31-5/8"	7-5/8"	1-1/4"	-
	JAS71FR	JAS71FL	31-5/8"	10-1/4"	1-1/4"	-
Chamfered	JAS61CR	JAS61CL	31-5/8"	7-5/8"	1-1/4"	3/4"
	JAS71CR	JAS71CL	31-5/8"	10-1/4"	1-1/4"	3/4"
Recessed	JAS61RR	JAS61RL	31-5/8"	7-5/8"	1-1/4"	1/2"
	JAS71RR	JAS71RL	31-5/8"	10-1/4"	1-1/4"	1/2"

JACK ARCHES - FLARED OUT SIDE EDGE

Style	Right	Left	Length	Flare	C	D	E
Flat	JAR61FR	JAR61FL	31-5/8"	1"	7-5/8"	1-1/4"	-
	JAR71FR	JAR71FL	31-5/8"	1-5/16"	10-1/4"	1-1/4"	-
Chamfered	JAR61CR	JAR61CL	31-5/8"	1"	7-5/8"	1-1/4"	3/4"
	JAR71CR	JAR71CL	31-5/8"	1-5/16"	10-1/4"	1-1/4"	3/4"
Recessed	JAR61RR	JAR61RL	31-5/8"	1"	7-5/8"	1-1/4"	1/2"
	JAR71RR	JAR71RL	31-5/8"	1-5/16"	10-1/4"	1-1/4"	1/2"

WINDOW SILLS 31 5/8" LONG

Style	Straight	Right Corner	Left Corner	A	B	C	D
Chamfer	SIL22CS2	SIL22CR2	SIL22CL2	1"	1-1/2"	4-7/8"	-
	SIL51LS2	SIL51LR2	SIL51LL2	1-1/4"	4-1/2"	5-5/8"	-
Virginia	SIL51VS2	SIL51VR2	SIL51VL2	1-1/4"	4-1/8"	5-5/8"	3"
	SIL51GS2	SIL51GR2	SIL51GL2	1-1/4"	4-3/8"	5-5/8"	2-3/4"
Charles	SIL51CS2	SIL51CR2	SIL51CL2	1-1/4"	4-1/4"	4-7/8"	-
	SIL51MS2	SIL51MR2	SIL51ML2	1-1/4"	4-3/4"	4-7/8"	3-1/4"



Fire-Rated Rainscreen

Conforms to ASTM E84

Class A / Class 1 Fire Rating

Why Fire-Rated Rainscreen?

No wall is waterproof. Today's "Tighter" building increase the risk of moisture and mold problems that rainscreen systems greatly reduce by enabling moisture to swiftly exit the building envelope. Municipalities are increasingly requiring fire-rated walls for multi-story residential structures. Fire-rated rainscreens are an inexpensive insurance to mitigate the risk of wall failure and meet stringent building codes.

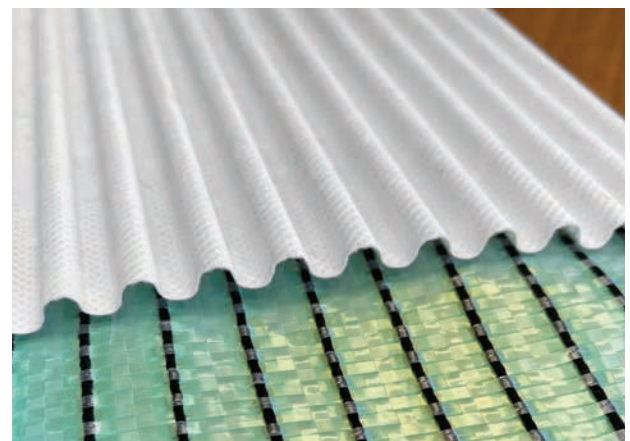
The TABS® Advantage

- ✔ Fire-Rated Rainscreen conforms to ASTM E84, Class A / Class 1
- ✔ Unobstructed Drainage
- ✔ Vapor Permeable for Full Ventilation
- ✔ Resists Compression, Reduces Waviness

Rigid channels don't compress, creating predictable drainage



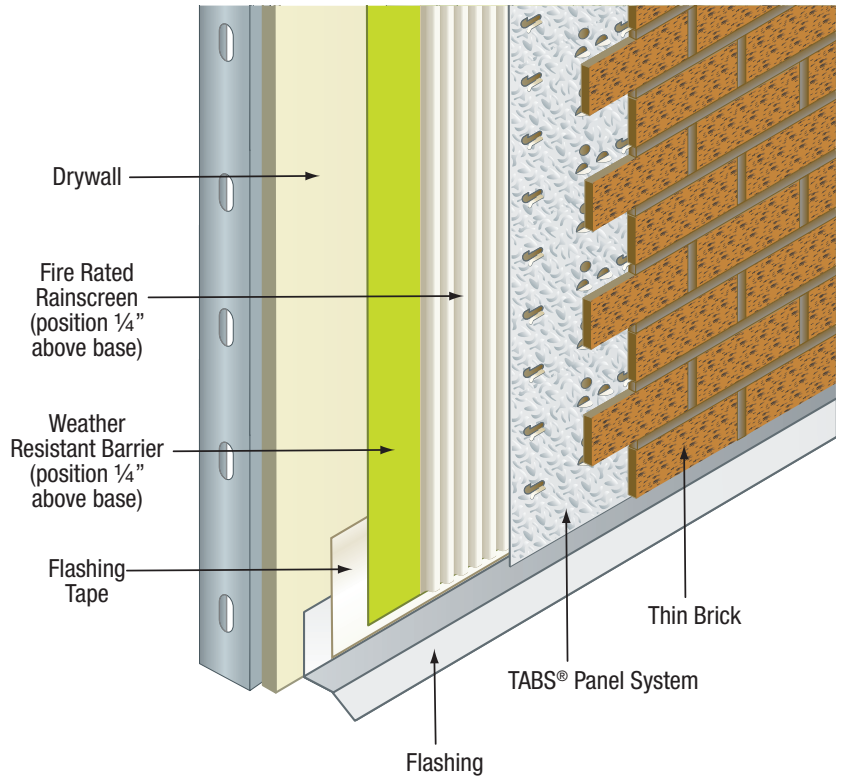
Fire-Rated Rainscreen



Fire-Rated Rainscreen with attached weather wrap

Installation

- ✔ Install Fire-Rated rainscreen outboard of water resistive barrier.
- ✔ Corrugated material to be butted at seams. Do not overlap corrugated material. It is not necessary to align channels. Wrap rainscreen around corners and extend to nearest structural member.
- ✔ Fasten every 60" on-center with a hammer stapler over nailable surfaces. On masonry backup walls use dime-size dabs of adhesive to hold in place.



Technical Information

Material Description Perforated and corrugated spunbond polyester body with an adhered spunbond polyester fabric.

Fire Rating ASTM E84, Class A / Class 1

Water Vapor Transmission 23.9 grains/hr·ft² (ICC-ES AC48)

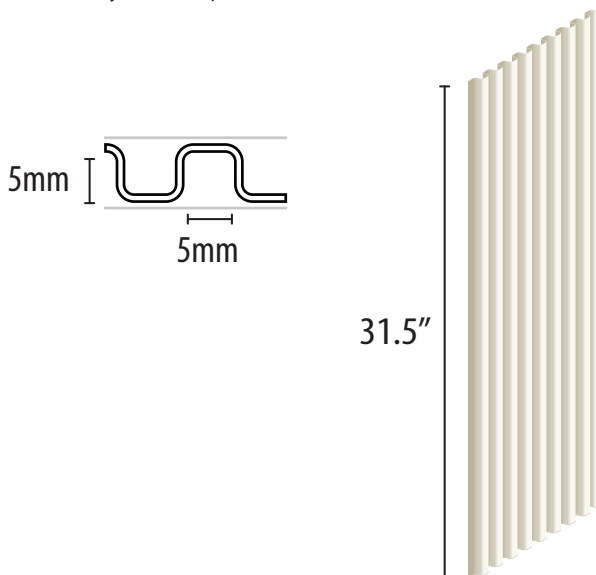
Permeability 266 perm·inch (ASTM E96)

Fungi Resistance Growth rating = Less growth compared to (control) material passing results

Compressive Strength 10% Displacement = 6.90 psi

Vapor Permeance 57.8 US Perms (ICC-ES AC48)

Modulus of Elasticity 57.8 US Perms (ICC-ES AC48)



Fire-rated Rainscreen

FRSC 5032

For Fire-Rated Systems

Depth (drainage gap)	3/16 in (5mm)
Roll Length	50 ft
Roll Width	31.5 in
Roll Coverage	132 ft ²
Pallet	4,224 ft ²

TABS® II Mortar Additive Added to Field Mixed Type S Mortar.

TABS® II

Weep Holes to be installed every 16" to 24" Horizontally Do not caulk under veneer.

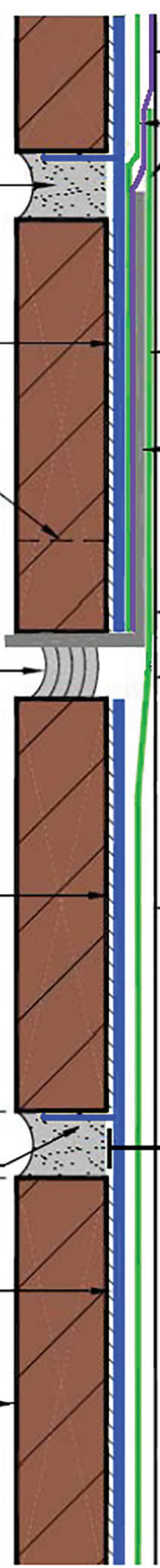
Sealant
Note: When Installing TABS® II Rain Screen, Do Not Use Sealant. Chamber Must be Left Open To Allow for Equalization Of Pressure.

TABS® II Adhesive (for use with Brick or Decorative Block) applied in Dabs (or) TABS® II Structural Silicone (for use with Natural or Manufactured Stone) applied in Vertical Strips.

TABS® II 90-Degree Double Tab Design, sits firmly beneath veneer, which eliminates open voids & air pockets.

TABS® II

1/ 2" to Maximum 1-1/ 4" Thin Masonry Veneer Supplied By TABS® Wall Systems or Approved Equal.



TABS® II Flashing Tape Wrapped Over Tabs II Rigid Flashing.

Rain Drop Wrap Lapped Over TABS® II G90 - 26 Gauge Rigid Flashing Minimum 6".

Extend Rain Drop Wrap Under & Past TABS® Galv. Flashing.

TABS® G-90 - 26 Gauge Flashing Fastened & Adhered to Building Structure.

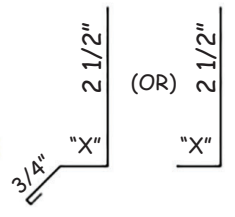
"X" TO DETERMINED BY SYSTEM THICKNESS

Cut Off TABS® Panel at support Tab to Facilitate TABS® Wall Systems G90 - 26 Gauge Rigid Flashing.

Control Joint Opening to Be Determined By Architect Or Engineer.

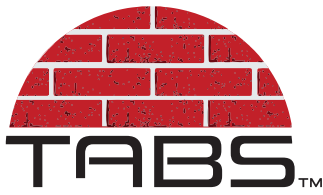
Substrate

TABS® II Non-Corrosive Fastener designed to meet substrate criteria.

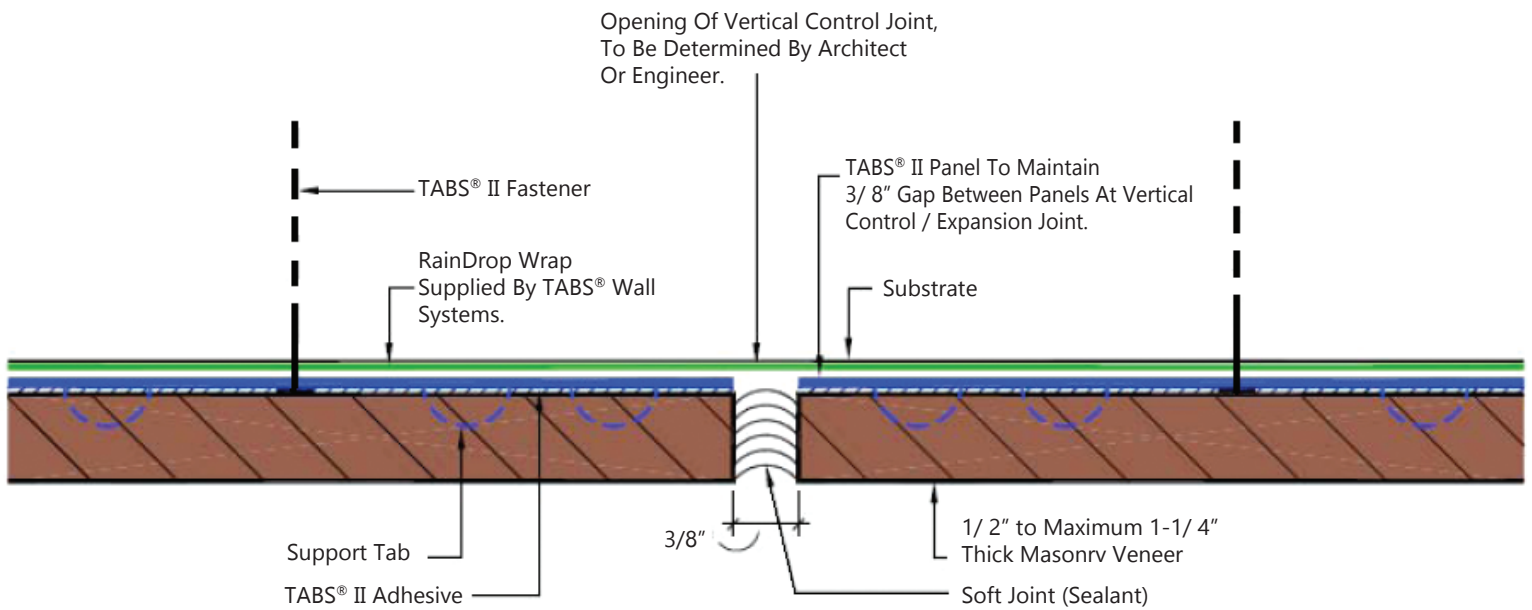


HORIZONTAL CONTROL JOINT

SCALE : FULL / LAST REVISION: 08-15-09



Thin Brick Support System and Veneer Support



VERTICAL CONTROL / EXPANSION JOINT

SCALE : FULL / LAST REVISION: 08-15-09



**Architecturally Specified Product
sold nationwide through an
exclusive network of distributors,
contact TABS® Wall Systems for
the nearest distributor near you.**

www.tabswallsystems.com

616-554-5400